

SAMPLE DRAWING
STRUCTURAL REBAR - PLAN / DETAIL
STRUCTURAL REBAR FABRICATION



NOTE: These drawings are provided as a convenience. It is each contractor's responsibility to verify sizes, dimensions, etc. We assume no liability. MDS Inc.

REVISIONS

REV	BY	DESCRIPTION	DATE
A	XX	ISSUE FOR REVIEW	08/08/08

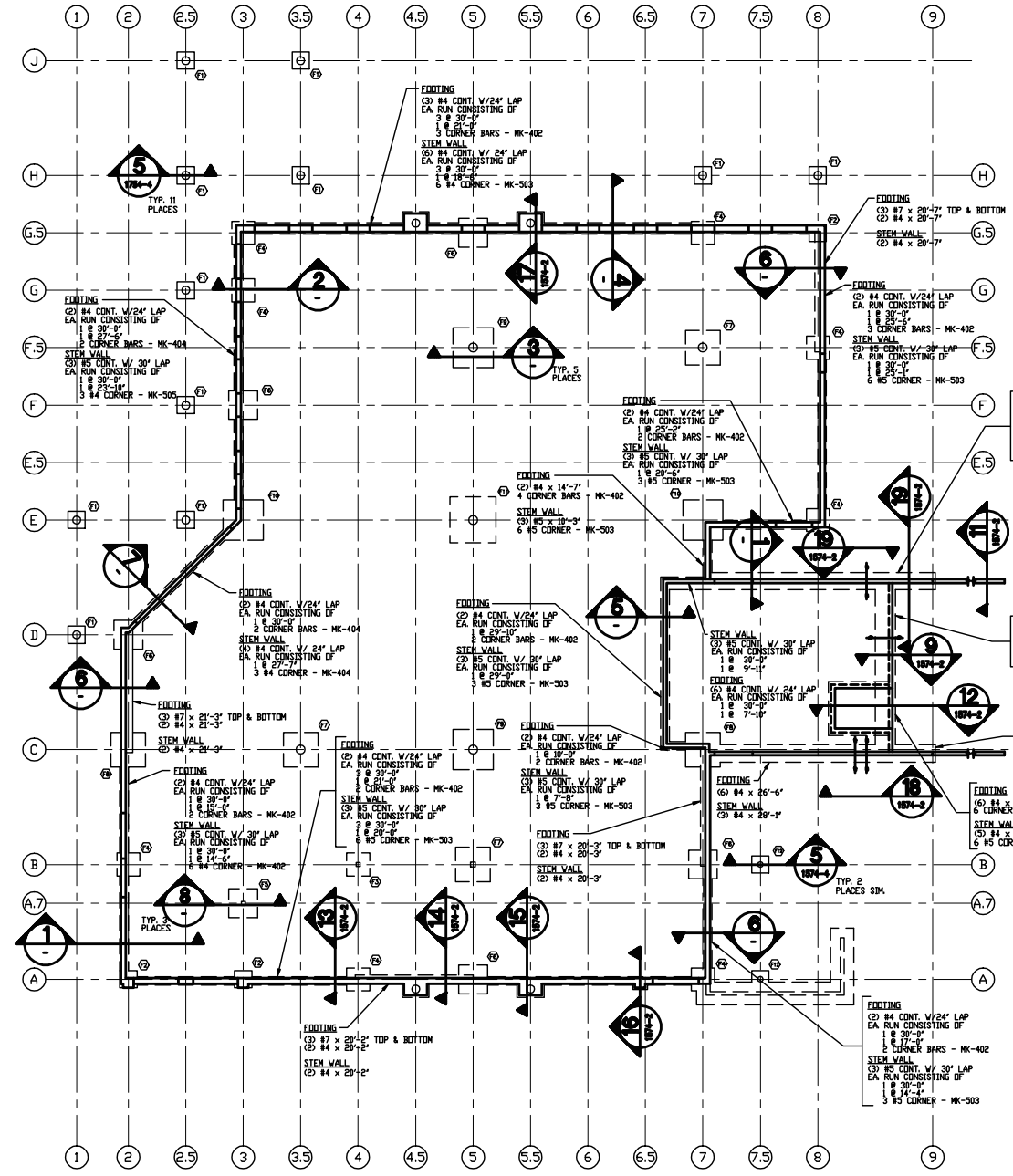
GENERAL NOTES

KEY NOTES

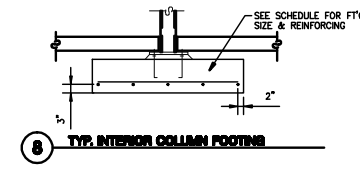
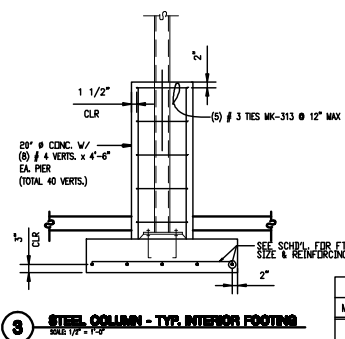
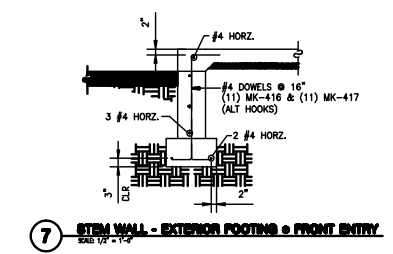
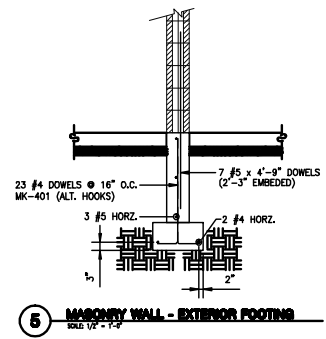
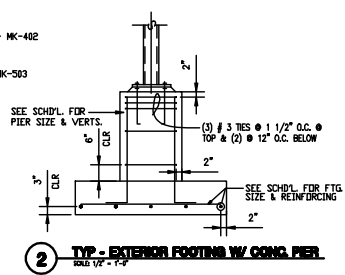
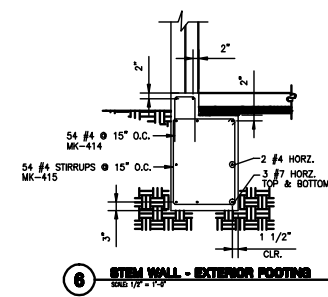
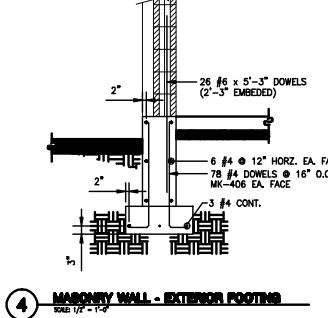
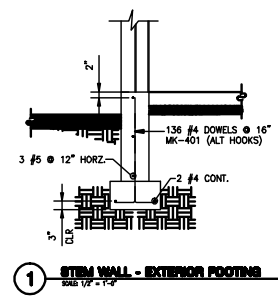
DRAWING

PROJECT NUMBER:	
MDS JOB No:	
PROJECT MGR:	
DRAWN BY:	DATE:
CHECKED BY:	DATE:
CAD FILE:	S-004
SCALE:	NONE
DRAWING NUMBER:	REVISION:
S-004	A

STRUCTURAL STEEL



PLAN
 SCALE 1/2" = 1'-0"



FOOTING SCHEDULE

FK	SIZE	REINFORCING	PIER SIZE	PIER REINFORCING
F1	3'-0" SQ. x 1'-0" DP.	(4) # 4 x 2'-8" EA. WAY	18" #	(8) # 5 DOWELS MK-506, #3 TIES MK-307 PER 2/1574-1
F2	3'-0" SQ. x 1'-0" DP.	(4) # 4 x 2'-8" EA. WAY	18" SQ.	(4) # 4 DOWELS 1 EA. CORNER MK-607, #3 TIES MK-308 PER 2/1574-1
F3	4'-0" SQ. x 1'-0" DP.	(5) # 5 x 3'-8" EA. WAY	-	-
F4	4'-0" SQ. x 1'-0" DP.	(5) # 5 x 3'-8" EA. WAY	18" SQ.	(8) # 5 DOWELS 3 EA. FACE MK-509, #3 MK-308, MK-308A TIES PER 2/1574-1
F5	5'-0" SQ. x 18" DP.	(6) # 5 x 4'-8" EA. WAY	-	-
F6	5'-0" SQ. x 18" DP.	(6) # 5 x 4'-8" EA. WAY	18" SQ.	(8) # 5 DOWELS 3 EA. FACE MK-510, #3 MK-308, MK-308A TIES PER 2/1574-1
F7	6'-0" SQ. x 18" DP.	(7) # 6 x 5'-8" EA. WAY	-	-
F8	6'-0" SQ. x 18" DP.	(7) # 6 x 5'-8" EA. WAY	18" SQ.	(8) # 5 DOWELS 3 EA. FACE MK-510, #3 MK-308, 308A TIES PER 2/1574-1
F9	7'-0" SQ. x 21" DP.	(7) # 7 x 6'-8" EA. WAY	-	-
F10	7'-0" SQ. x 21" DP.	(7) # 7 x 6'-8" EA. WAY	20" SQ.	(8) # 5 DOWELS 3 EA. FACE MK-511, #3 MK-312, MK-312A TIES PER 2/1574-1
F11	8'-0" SQ. x 24" DP.	(8) # 8 x 7'-8" EA. WAY	-	-
F12	3'-0" SQ. x 12" DP.	(4) # 4 x 2'-8" EA. WAY	12" #	(6) # 5 DOWELS MK-508, #3 MK-308 TIE SETS PER 2/1574-1

